

## Inlet Filter Assembly for SVB Series Blowers

The inlet filter is designed for Air Systems' SVB series of portable industrial blowers. The unit filters inlet ambient air so workers in a confined space are not exposed to ambient dust. The system controls dust and particulates from entering a confined space where industrial coatings are being applied. The filter also reduces the potential for dust ignition in a confined space when used with an explosion-proof or intrinsically safe blower. Filters are available with 5 micron or 99.97% HEPA rating.

Filter Holder



SVB-IFH9

Standard Filter



SVB-IF9ST

HEPA Filter



SVB-IF9HE



Blower sold separately

Model No.	Description
SVB-IFH9	Inlet filter holder, no filter, order filter choice below
SVB-IF9ST	Inlet filter, standard, 99% efficient at 5 micron, <1% flow loss with 25 ft duct
SVB-IF9HE	Inlet filter, HEPA 99.97% efficient at 0.3 micron, 40% flow reduction with 25 ft duct

See pages 47 & 51 for SVB blowers

## Ventilation Accessories



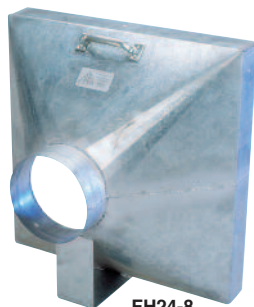
FH24-8-14  
Closed

### In-line HEPA Filter Holder

- Attaches before or after blower for positive or negative filtration
- Pre-filter for dusts or odors
- 8" inlet and exhaust flange
- Galvanized steel
- Optional stainless steel or aluminum frame
- Holds a 24" x 24" x 11.5" HEPA filter plus a 24" x 24" x 2" pleated pre-filter



FH24-8-14  
Open



FH24-8

### In-line Pleated Filter Holder

#### Specifications

- Holds a 24" x 24" x 2" pleated filter
- 8" duct flange on one side
- Allows user to filter intake or discharge air
- Galvanized steel
- Optional stainless steel or aluminum frame
- Custom sizes and designs available

Model No.	Description
FH24-8	In-line Filter Holder holds 24" x 24" x 2" pre-filter
FH24-8-14	In-line Filter Holder holds 24" x 24" x 11.5" HEPA and 2" pre-filter
ASI-242C	Pleated Carbon Odor Removal Filter, 24" x 24" x 2", case of 6
FLTR004C	Pleated dust Filter, 24" x 24" x 2", case of 12
PFE-2412HF	HEPA Filter, 24" x 24" x 11.5"

## Electric Ventilation Heaters



27" L X 16" H X 15.5" W  
40 LBS.

SVF-7KW-8

### Specifications

- Heaters operate with blower or fan only
- 8" inlet and exhaust flange
- Aluminum frame with steel control box
- Automatic start with blower running
- Built-in safety pressure switch
- Automatic thermal shutdown at 170°F
- 144°F output at exhaust, 112°F with 15' duct
- Order 3 ft. heater connect duct, Model no SVH-3

All Electric heaters are available with optional duct size flanges

SVF-15KW-8



32" L X 27" H X 37.5" W  
95 LBS.

Model No.	Description
SVF-7KW-8	Electric 8" ventilation heater, 7kw, 230/1, 28 amps, 23,900 BTU - 30 amp plug
SVF-10KW-6	Electric 6" ventilation heater, 10kw, 440/3, 15 amps, 34,145 BTU - user wired
SVF-15KW-8	Electric 8" ventilation heater, 15kw, 440/3, 26 amp, 51,216 BTU - user wired