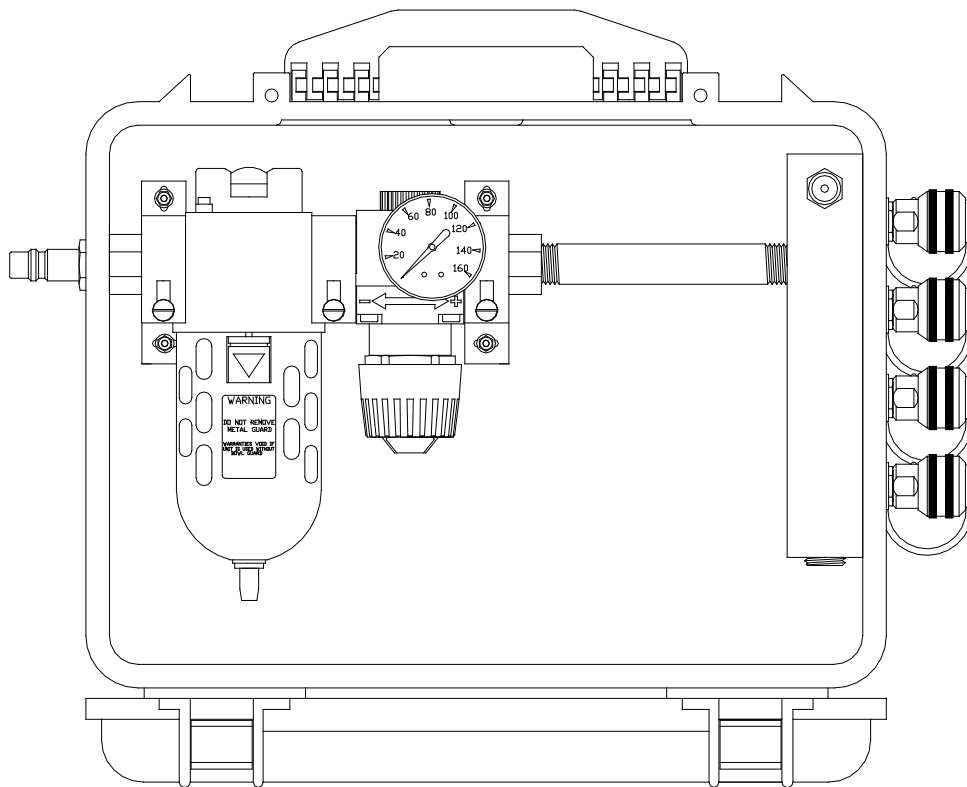




## OPERATING INSTRUCTIONS AND REPLACEMENT PARTS

**Models:  
POA-2F, POA-4F, POA-5F, and POA-6F**



### WARNING

This manual must be read carefully and followed by all persons who have or will have the responsibility for using or servicing this equipment. This equipment will perform as designed only if used according to the instructions. Otherwise it could fail to perform as designed, causing personal injury or death.

### AIR SYSTEMS INTERNATIONAL, INC.

829 Juniper Crescent, Chesapeake, Va, 23320

Telephone (757) 424-3967

Toll Free 1-800-866-8100

Fax No. (757) 424-5348

[www.airsystems.com](http://www.airsystems.com).

e-mail: [sales@airsystems.com](mailto:sales@airsystems.com)

## Overview

The POA series of remote manifold boxes is designed to meet NIOSH requirements (adjustable regulator, pressure gauge, safety relief valve, and respirator coupling(s) for a point-of-attachment when the work area is of considerable distance from the filtration source or main air supply. The POA series must be supplied with Grade-D air at the required air pressure (psi) and volume (cfm).

## Specifications

Size	19"L x 13"H x 7"D
Weight	10.5 lbs
Outlets	Number of outlets depends on model ordered
Maximum Air Flow (cfm/lpm)	80 cfm@110 psi 2265 lpm@7.6 bar
Maximum Inlet Pressure	150 psi (10.3 bar)
Maximum Outlet Pressure	125 psi (8.6 bar)
Relief Valve	125 psi (8.6 bar)
Regulator	Adjustable, 0-125 psi (8.6 bar)
Filter Efficiency	Removes 95% bulk particulate and liquids @ 5 microns

**Note:** *These units should be operated in the closed position to prevent contamination and damage to the internal components.*

## Set-up/Operation

### STEP 1)

Attach a 1/2" (13mm) incoming air line from the Grade-D compressed air source to the inlet fitting.

### STEP 2)

Attach desired respirators and lengths of hose to the quick connect outlet couplings.

### STEP 3)

Adjust the outlet pressure to the setting recommended by the respirator manufacturer. Turn the knob clockwise to increase pressure, counterclockwise to decrease pressure.

## Shutdown

- Make sure all personnel have egressed from the work area.
- Shut off air source to the Point-of-Attachment box.
- Remove air pressure from the Point-of-Attachment box by pulling out the relief valve ring.
- Disconnect airline hoses.
- Install dust caps, if applicable.

## Maintenance

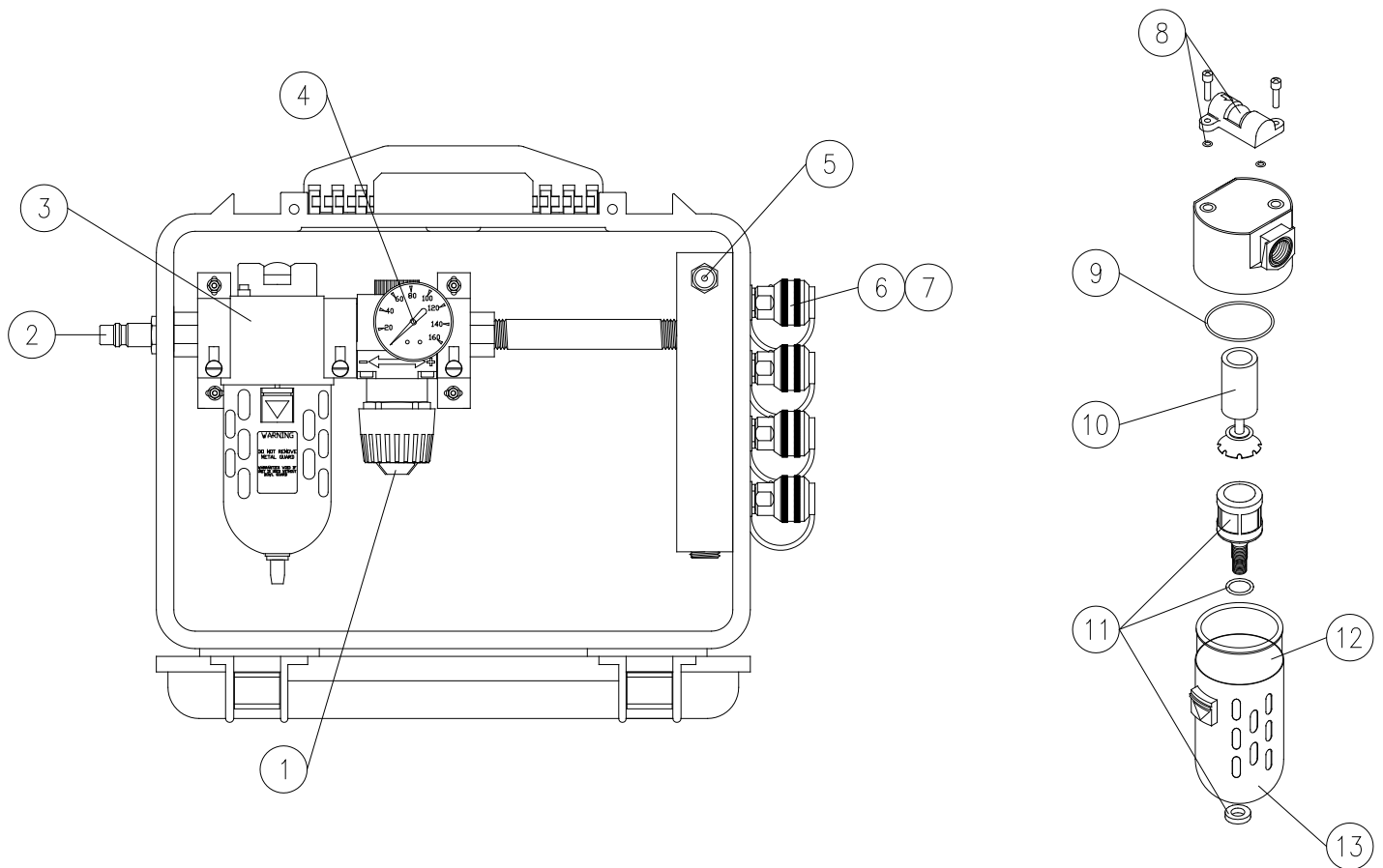
**⚠ CAUTION:** Always depressurize the system before performing service.

**Filter Housing/Bowl:** Periodic cleaning of the polycarbonate bowl may become necessary. Remove the drain and clean the bowl with a mild soapy solution. The drain may also be cleaned with a mild soapy solution at this time. Dry and re-install into the filter housing.

**Filter Change:** The filter consists of a filter change indicator which will gradually change from green to red when filter life is spent.

**Note:** Air must be flowing through the filter before the filter change indicator will function.

## System Components



ITEM #	DESCRIPTION	PART #
1	PRESSURE REGULATOR	WL014
2	INLET FITTING	QDH5PL8M
3	FINAL FILTER ASSEMBLY	WL007A
4	PRESSURE GAUGE	GA20160B
5	125 PSI RELIEF VALVE	VR4125BR
6	HANSEN COUPLING	QDH3SL6M
6A	SCHRADER COUPLING	QDSSL6M
7	HANSEN DUST CAP	QDH3DCAP
7A	SCHRADER DUST CAP	QDSDCAP
8	FILTER CHANGE INDICATOR	WL056
9	FILTER BOWL O-RING	WL091
10	FILTER ELEMENT	BB50-A
11	MANUAL DRAIN ASSEMBLY	WL153
12	PLASTIC FILTER BOWL	WL049
13	METAL BOWL GUARD	WL094

## Warranty

Air Systems' manufactured equipment is warranted to the original user against defects in workmanship or materials under normal use for one year from the date of purchase. Any part which is determined by Air Systems to be defective in material or workmanship will be, as the exclusive remedy, repaired or replaced at Air Systems' option. This warranty does not apply to electrical systems or electronic components. Electrical parts are warranted, to the original user, for 90 days from the date of sale. During the warranty period, electrical components will be repaired or replaced at Air Systems' option.

**NO OTHER WARRANTY, EXPRESSED OR IMPLIED, AS TO DESCRIPTION, QUALITY, MERCHANTABILITY, FITNESS FOR A PARTICULAR PURPOSE, OR ANY OTHER MATTER IS GIVEN BY AIR SYSTEMS IN CONNECTION HEREWITH. UNDER NO CIRCUMSTANCES SHALL THE SELLER BE LIABLE FOR LOSS OF PROFITS, ANY OTHER DIRECT OR INDIRECT COSTS, EXPENSES, LOSSES, OR DAMAGES ARISING OUT OF DEFECTS IN, OR FAILURE OF THE PRODUCT OR ANY PART THEREOF.**

The purchaser shall be solely responsible for compliance with all applicable Federal, State and Local OSHA and/or MSHA requirements. Although Air Systems International believes that its products, if operated and maintained as shipped from the factory and in accordance with our "operations manual", conform to OSHA and/or MSHA requirements, there are no implied or expressed warranties of such compliance extending beyond the limited warranty described herein. Product designs and specifications are subject to change without notice. Rev. 2, 12/98

Air leaks are not covered under warranty except when they result from a defective system component, i.e. an on/off valve or regulator or upon initial delivery due to poor workmanship. Air leaks due to poor delivery or damage will be covered under delivery claims. Minor air leaks are part of routine service and maintenance and are the responsibility of the customer just as are filters and oil changes.